



*Sun Valley* 

WOMEN COLLECTION  
WINTER 2016



NEO RETRO



WOMEN SKIWEAR COLLECTION  
WINTER 2016/17





9999/1088



## BRINDI

WP : 20 000 MM | MP : 20 000 MM

XS | S | M | L | XL | XXL

FOURRURE VÉRITABLE | TOUTES COUTURES SOUDÉES | STRETCH | PARE NEIGE AMOVIBLE | EMMANCHURES & COUDES ARTICULÉS | ESSUIE MASQUE | COMPARTIMENT INTÉRIEUR MP3 | GRANDE POCHE FILET | POCHE FORFAIT | CAPUCHE TEMPÊTE 3D RÉGLABLE AMOVIBLE | MANCHONS | CROCHET CLEF  
*Real fur | All sealed seam | Stretch | Removable storm skirt | Articuled armhole + elbow | Glass cleaner | MP3 pocket | Large mesh pocket | Ski Pass pocket | Tempest hood adjustable & removable | Cuff gaiter | Key hook*



9999



## DAIQYAR

WP : 20 000 MM | MP : 20 000 MM

XS | S | M | L | XL

FOURRURE VÉTITABLE | ASPECT BRILLANT | STRETCH | TOUTES COUTURES SOUDÉES | VENTILATION | PARE NEIGE AMOVIBLE | EMMANCHURES & COUDES ARTICULÉS | ESSUIE MASQUE | COMPARTIMENT INTÉRIEUR MP3 | GRANDE POCHE FILET | POCHE FORFAIT | CAPUCHE TEMPÊTE 3D RÉGLABLE AMOVIBLE | MANCHONS | CROCHET CLEF  
*Real fur | Shiny appearance | Stretch | All sealed seam | Vent | Removable storm skirt | Articuled armhole + elbow | Glass cleaner | MP3 pocket | Large mesh pocket | Ski Pass pocket | Tempest hood adjustable & removable | Cuff gaiter | Key hook*



9999



## SHLOER

WP : 20 000 MM | MP : 20 000 MM

34 | 36 | 38 | 40 | 42 | 44 | 46

TOUTES COUTURES SOUDÉES | TAILLE AJUSTABLE ELASTIQUE CROISÉ | GENOUX PRÉFORMÉS  
 GUÊTRES MONTÉES SUR STRETCH | MONTAGE INTÉRIEUR PARE CARE SANS COUTURES | CROCHET CLEF  
*All sealed seam | Adjustable waistband with elastic cross | Preformed knees  
 Stretch gaiters | Invisible bottom reinforcement inside leg without seams | Key hook*



9999



## SHWEPS

WP : 20 000 MM | MP : 20 000 MM

34 | 36 | 38 | 40 | 42 | 44 | 46

TOUTES COUTURES SOUDÉES | ASPECT BRILLANT | TAILLE AJUSTABLE ELASTIQUE CROISÉ | GENOUX PRÉFORMÉS  
 GUÊTRES MONTÉES SUR STRETCH | MONTAGE INTÉRIEUR PARE CARE SANS COUTURES | CROCHET CLEF  
*All sealed seam | Shiny appearance | Adjustable waistband with elastic cross | Preformed knees  
 Stretch gaiters | Invisible bottom reinforcement inside leg without seams | Key hook*



## KOPER

WP : 20 000 MM | MP : 15 000 MM

XS | S | M | L | XL

FOURRURE VÉRITABLE | ASPECT SATIN | STRETCH | TOUTES COUTURES SOUDÉES | VENTILATION | PARE NEIGE AMOVIBLE | EMMANCHURES & COUDES ARTICULÉS | ESSUIE MASQUE | COMPARTIMENT INTÉRIEUR MP3 | GRANDE POCHE FILET | POCHE FORFAIT | CAPUCHE 3D RÉGLABLE AMOVIBLE | MANCHONS | CROCHET CLEF  
*Real fur | Satin appearance | Stretch | All sealed seam | Vent | Removable storm skirt | Articuled armhole + elbow | Glass cleaner | MP3 pocket | Large mesh pocket | Ski Pass pocket | Tempest hood adjustable & removable | Cuff gaiter | Key hook | Real fur hood (NYA)*



## OMBEL

WP : 20 000 MM | MP : 15 000 MM

XS | S | M | L | XL

ASPECT SATIN | STRETCH | TOUTES COUTURES SOUDÉES | VENTILATION | PARE NEIGE AMOVIBLE | EMMANCHURES & COUDES ARTICULÉS | ESSUIE MASQUE | COMPARTIMENT INTÉRIEUR MP3 | GRANDE POCHE FILET | POCHE FORFAIT | CAPUCHE 3D RÉGLABLE AMOVIBLE | MANCHONS | CROCHET CLEF  
*Satin appearance | Stretch | All sealed seam | Vent | Removable storm skirt | Articuled armhole + elbow | Glass cleaner | MP3 pocket | Large mesh pocket | Ski Pass pocket | Tempest hood adjustable & removable | Cuff gaiter | Key hook | Real fur hood (NYA)*



## IRVING

WP : 20 000 MM | MP : 15 000 MM

34 | 36 | 38 | 40 | 42 | 44

STRETCH | ASPECT SATIN | TOUTES COUTURES SOUDÉES | CÔTÉS SMOCKS ELASTIQUÉS | GUÊTRES MONTÉES SUR STRETCH | MONTAGE INTÉRIEUR PARE CARE SANS COUTURES  
*Stretch | Satin appearance | All sealed seam | Elastic side smocks | Stretch gaiters | Invisible bottom reinforcement inside leg without seams*



## VIRING

WP : 20 000 MM | MP : 15 000 MM

34 | 36 | 38 | 40 | 42 | 44

STRETCH | ASPECT SATIN | TOUTES COUTURES SOUDÉES | TAILLE AJUSTABLE ÉLASTIQUE CROISÉ | GUÊTRES MONTÉES SUR STRETCH | MONTAGE INTÉRIEUR PARE CARE SANS COUTURES  
*Stretch | Satin appearance | All sealed seam | Adjustable waistband with elastic cros | Stretch gaiters | Invisible bottom reinforcement inside leg without seams*



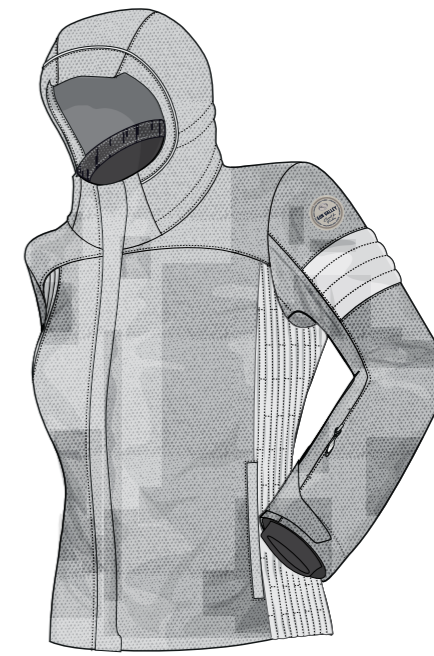
0052/0314

8172/9999

9999/0314



6403/0052/6380



1088/0052/1472



## VLORA

WP : 20 000 MM | MP : 15 000 MM

XS | S | M | L | XL

STRETCH | TOUTES COUTURES SOUDÉES | VENTILATION | PARE NEIGE AMOVIBLE | EMMANCHURES & COUDES ARTICULÉS |  
 ESSUIE MASQUE | COMPARTIMENT INTÉRIEUR MP3 | GRANDE POCHE FILET | POCHE FORFAIT |  
 CAPUCHE TEMPÊTE 3D RÉGLABLE AMOVIBLE | MANCHONS | CROCHET CLEF  
*Stretch | All sealed seam | Vent | Removable storm skirt | Articuled armhole + elbow | Glass cleaner | MP3 pocket | Large mesh pocket |  
 Ski Pass pocket | Tempest hood adjustable & removable | Cuff gaiter | Key hook*



## MOJITO

WP : 15 000 MM | MP : 10 000 MM

XS | S | M | L | XL | XXL

COUTURES PRINCIPALES SOUDÉES | PARE NEIGE AMOVIBLE | CÔTÉS SMOCKS ELASTIQUÉS | EMMANCHURES & COUDES  
 ARTICULÉS | ESSUIE MASQUE | COMPARTIMENT INTÉRIEUR MP3 | GRANDE POCHE FILET | POCHE FORFAIT |  
 CAPUCHE TEMPÊTE 3D RÉGLABLE AMOVIBLE | MANCHONS | CROCHET CLEF  
*Main sealed seam | Removable storm skirt | Elastic side smocks | Articuled armhole + elbow | Glass cleaner | MP3 pocket |  
 Large mesh pocket | Ski Pass pocket | Tempest hood adjustable & removable | Cuff gaiter | Key hook*

## SMASH



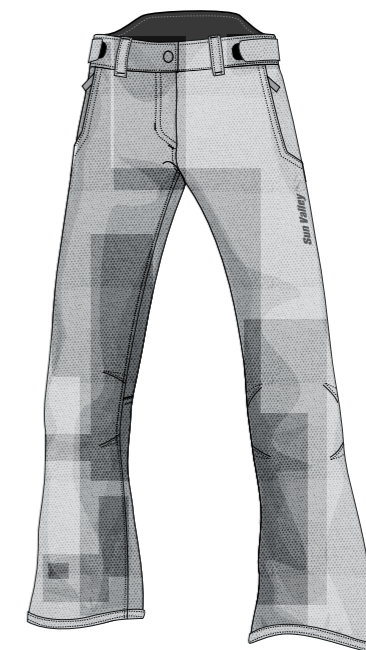
0052

8172

9999



6403



1088



## MIRINDA

WP : 20 000 MM | MP : 15 000 MM

34 | 36 | 38 | 40 | 42 | 44

STRETCH | TOUTES COUTURES SOUDÉES | GUÊTRES MONTÉES SUR STRETCH | MONTAGE INTÉRIEUR PARE CARE  
 SANS COUTURES  
*Stretch | All sealed seam | Stretch gaiters | Invisible bottom reinforcement inside leg without seams*



## SIDDNI

WP : 15 000 MM | MP : 10 000 MM

34 | 36 | 38 | 40 | 42 | 44 | 46

COUTURES PRINCIPALES SOUDÉES | TAILLE AJUSTABLE ELASTIQUE CROISÉ | GENOUX PRÉFORMÉS  
 GUÊTRES MONTÉES SUR STRETCH | MONTAGE INTÉRIEUR PARE CARE SANS COUTURES | CROCHET CLEF  
*Main sealed seam | Adjustable waistband with elastic cross | Preformed knees  
 Stretch gaiters | Invisible bottom reinforcement inside leg without seams | Key hook*

## IZMIR



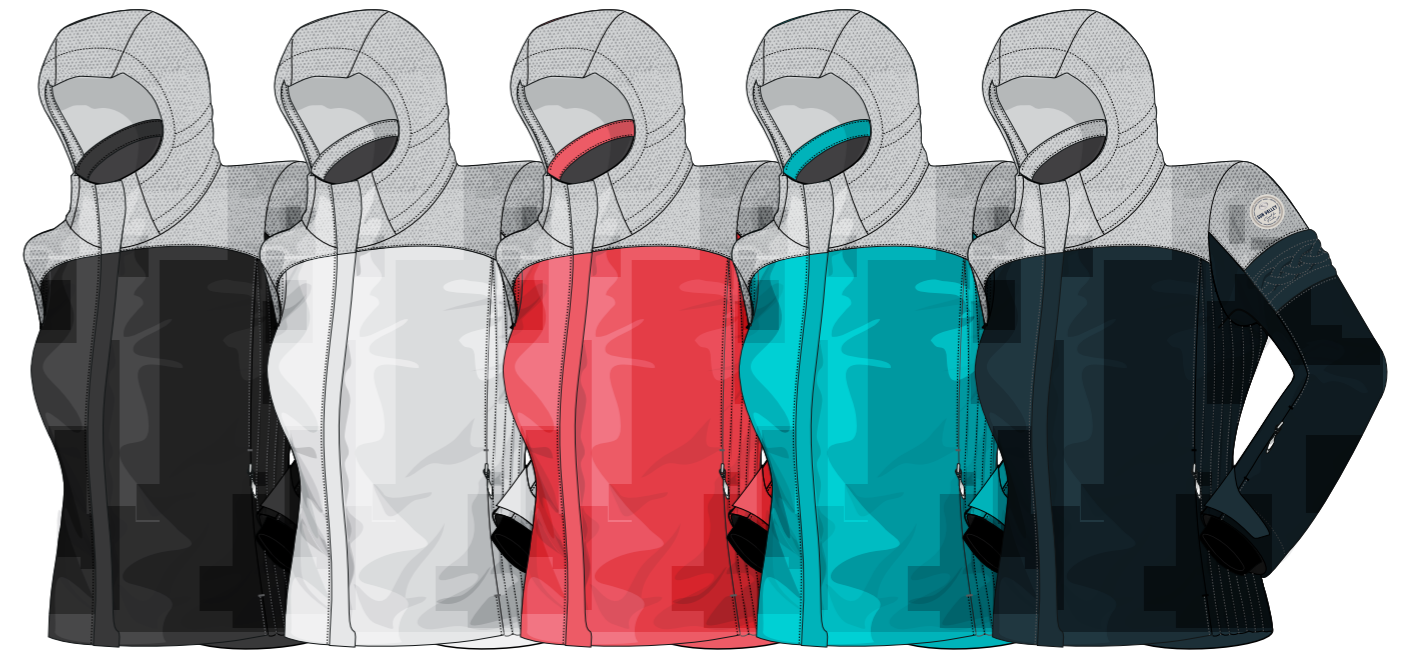
4809 9999 8172 4037 0052



## BIJOU

WP : 20 000 MM | MP : 15 000 MM  
XS | S | M | L | XL | XXL

STRETCH | PARE NEIGE AMOVIBLE | EMMANCHURES & COUDES ARTICULÉS | ESSUIE MASQUE | COMPARTIMENT INTÉRIEUR MP3 | GRANDE POCHE FILET | POCHÉ FORFAIT | CAPUCHE TEMPÊTE 3D RÉGLABLE AMOVIBLE | MANCHONS CROCHET CLEF  
*Stretch | Removable storm skirt | Articulated armhole + elbow | Glass cleaner | MP3 pocket | Large mesh pocket | Ski Pass pocket | Tempest hood adjustable & removable | Key hook*



9999/1088 0052/1088 8172/1088 4037/1088 6380/1088



## CREME

WP : 20 000 MM | MP : 15 000 MM  
XS | S | M | L | XL

STRETCH | PARE NEIGE AMOVIBLE | EMMANCHURES & COUDES ARTICULÉS | ESSUIE MASQUE | COMPARTIMENT INTÉRIEUR MP3 | GRANDE POCHE FILET | POCHÉ FORFAIT | CAPUCHE TEMPÊTE 3D RÉGLABLE AMOVIBLE | MANCHONS CROCHET CLEF  
*Stretch | Removable storm skirt | Articulated armhole + elbow | Glass cleaner | MP3 pocket | Large mesh pocket | Ski Pass pocket | Tempest hood adjustable & removable | Cuff gaiter | Key hook*



0052 9999 4809 8172 4037 6380 1269



## TIZER

WP : 20 000 MM | MP : 15 000 MM  
34 | 36 | 38 | 40 | 42 | 44

STRETCH | COUTURES PRINCIPALES SOUDÉES | GUÊTRES MONTÉES SUR STRETCH | MONTAGE INTÉRIEUR PARE CARE SANS COUTURES  
*Stretch | Main sealed seam | Stretch gaiters | Invisible bottom reinforcement inside leg without seams*



9999 1269 6380 0052 4809 4037 8172



## CALISTO

WP : 20 000 MM | MP : 15 000 MM  
34 | 36 | 38 | 40 | 42 | 44 | 46

COUTURES PRINCIPALES SOUDÉES | TAILLE AJUSTABLE ELASTIQUE CROISÉ | GENOUX PRÉFORMÉS GUÊTRES MONTÉES SUR STRETCH | MONTAGE INTÉRIEUR PARE CARE SANS COUTURES | CROCHET CLEF  
*Main sealed seam | Adjustable waistband with elastic cross | Preformed knees | Stretch gaiters | Invisible bottom reinforcement inside leg without seams | Key hook*



1125/0052

6914/9999

9999/9999

8172/8172



## GINFIZZ

WP : 20 000 MM | MP : 15 000 MM

XS | S | M | L | XL

EMPIÈCEMENTS STRETCH | PARE NEIGE AMOVIBLE | EMMANCHURES & COUDES ARTICULÉS | ESSUIE MASQUE  
 COMPARTIMENT INTÉRIEUR MP3 | GRANDE POCHE FILET | POCHÉ FORFAIT | CAPUCHE 3D RÉGLABLE AMOVIBLE |  
 MANCHONS | CROCHET CLEF

Stretch patch | Removable storm skirt | Articulated armhole + elbow | Glass cleaner | MP3 pocket | Large mesh pocket | Ski Pass pocket  
 Tempest hood adjustable & removable | Cuff gaiter | Key hook



9999

0053/1182

9997/1182



## BESSAY

WP : 10 000 MM | MP : 10 000 MM

XS | S | M | L | XL | XXL

PARE NEIGE AMOVIBLE | EMMANCHURES & COUDES ARTICULÉS | ESSUIE MASQUE | COMPARTIMENT INTÉRIEUR MP3  
 GRANDE POCHE FILET | POCHÉ FORFAIT | CAPUCHE TEMPÊTE 3D RÉGLABLE AMOVIBLE | MANCHONS | CROCHET CLEF

Removable stormskirt | Articulated armhole + elbow | Glass cleaner | MP3 pocket | Large mesh pocket | Ski Pass pocket  
 Tempest hood adjustable & removable | Cuff gaiter | Key hook



0052

9999



0052

9999



9999



## COCKTAL

WP : 10 000 MM | MP : 10 000 MM

34 | 36 | 38 | 40 | 42 | 44 | 46

GENOUX PRÉFORMÉS | GUÊTRES MONTÉES SUR STRETCH | PARE CARE SANS COUTURES | OUVERTURE ZIPÉE BAS  
 Preformed knees | Stretch gaiters | Reinforcement without seams | Zipped bottom opening



## COBBLER | CHLEF

WP : 10 000 MM | MP : 10 000 MM

32 | 34 | 36 | 38 | 40 | 42 | 44 | 46

STRETCH | GUÊTRES MONTÉES SUR STRETCH  
 Stretch | Stretch gaiters



0052/1125

9999/1125

4038/1125

8230/1125

# CAIPIRI

XS | S | M | L | XL | XXL  
 SECONDE COUCHE MICRO  
 POUR ISOLATION THERMIQUE.



0052/1182

9999/1182

# CATANE

XS | S | M | L | XL | XXL  
 SECONDE COUCHE MICRO  
 POUR ISOLATION THERMIQUE.



8230

0052

9999

# HOLYPOP

XS | S | M | L | XL  
 POLAIRE LOURDE GRATTÉ MOUTON.  
 100% POLYESTER 400GR.



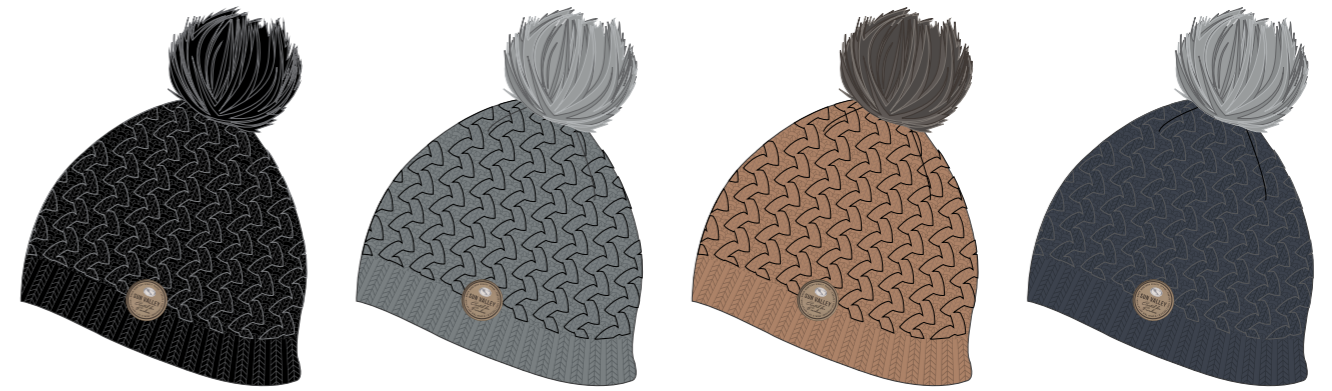




0022/9999 1212/1195 0011/8383



0022



9999 1203 2044 1212

# BOIVIN

BONNET JACQUARD, ACRYLIQUE  
Jacquard beanie, acrylic.  
TAILLE UNIQUE

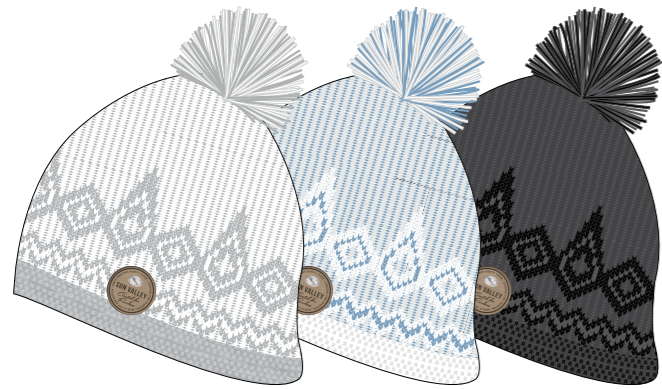


# MOYNA

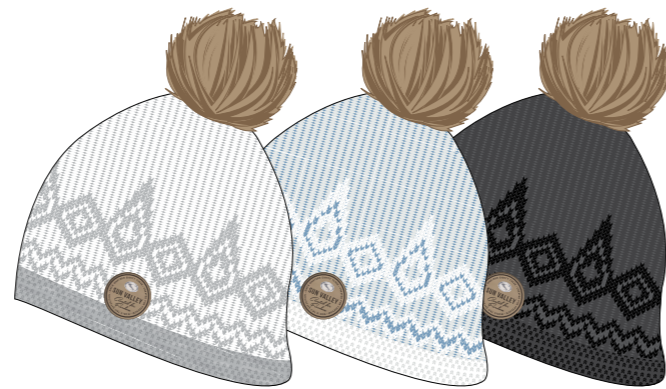
BONNET ACRYLIQUE  
Beanie acrylic.  
TAILLE UNIQUE

# SWINE

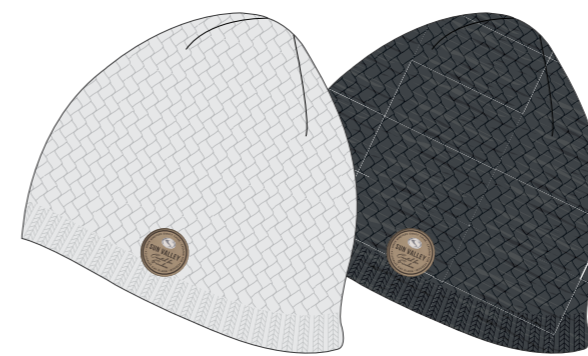
BONNET ACRYLIQUE  
Beanie acrylic.  
TAILLE UNIQUE



1195/0052 0022/6455 9999/1079



1195/0052 0022/6455 9999/1079



0011 1472



0052/1212 5272/9999 1203/0052

# CUERVO

BONNET JACQUARD, ACRYLIQUE  
Jacquard beanie, acrylic.  
TAILLE UNIQUE



# SPYWHO

BONNET JACQUARD, ACRYLIQUE  
POMPON VRAI FOURRURE  
Jacquard beanie, acrylic. Real fur pompon  
TAILLE UNIQUE

# SOBRINOS

BONNET ACRYLIQUE  
Beanie acrylic.  
TAILLE UNIQUE



# HUBLO



1041 0052 1472 8098



1041 0052 1472 8098



0052 9999

# DAYLIGHT

BONNET ACRYLIQUE  
POMPON VRAI FOURRURE  
Beanie acrylic. Real fur pompon.  
TAILLE UNIQUE



# DROZ

BONNET ACRYLIQUE  
Beanie acrylic.  
TAILLE UNIQUE

# SOCOURCH

CHAUSSETTE PERFORMANCE  
Bio céramique : Thermo-régulation  
35-37 | 38-39 | 40-41 | 42-43 | 44-46



# SOCHAM

CHAUSSETTE PERFORMANCE  
Laine Mérinos & soie : finesse et chaleur  
35-37 | 38-39 | 40-41 | 42-43 | 44-46

WOMAN SPORTSWEAR COLLECTION  
WINTER 2016/17



9999  
BLACK  
Pantone

China Girls Clair  
BC01 BROSS



NATIVE  
SPIRIT



8098  
Angie Rouge  
PANTONE \*  
18-1449 TCK

1209  
Baton  
PANTONE \*  
18-0201 TCK

Blanc Cassé  
PANTONE \*  
12-4302 TCK



1472  
China Girls Fonce  
BAS BROSS

6403  
Denim Brut

6455  
Bleu Denim  
PANTONE \*  
18-3922 TCK



1079  
Anthracite Chine  
SWATCH

1212  
Fur  
PANTONE \*  
19-3908 TCK

5272  
Or VII  
PANTONE \*  
15-1046 TCK

1084  
China Girls Moyen  
SWATCH

0052  
WHITE  
Pantone



Girls  
ARE COOL



SUN VALLEY



0052      8172      4037      1269      5248

**SYRUP** FOURRURE SYNTHÉTIQUE - *SYNTHETIC FUR*  
**SYRUPR** VRAIE FOURRURE - *REAL FUR*



XS | S | M | L | XL  
 DOUDOUNE LOURDE,  
 EMPIÈCEMENT CÔTÉS  
 STRETCH, PARE NEIGE FIXE,  
 100% NYLON TAFFETAS.



9999      0020      1033      1128

**DEATHIN**

XS | S | M | L | XL | XXL  
 DOUDOUNE ÉPAISSE,  
 MONTAGE SANS DOUBLURE,  
 TAFFETAS 100% POLYESTER.

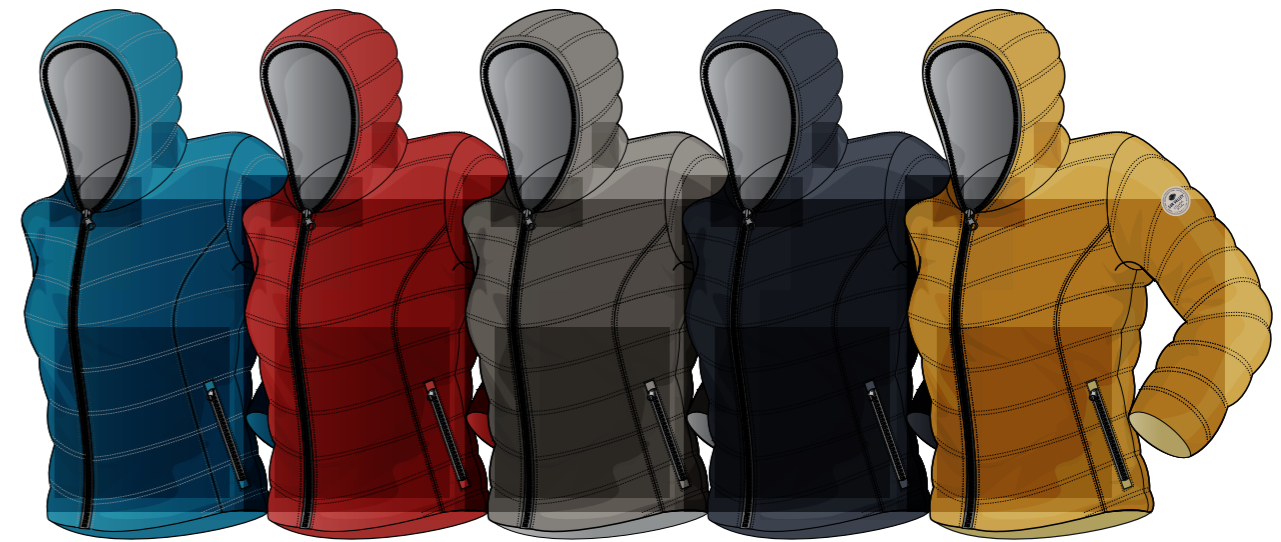


9999      6914      5614      6392      8092

**SWIZZLE** FOURRURE SYNTHÉTIQUE - *SYNTHETIC FUR*  
**SWIZZLER** VRAIE FOURRURE - *REAL FUR*



XS | S | M | L | XL  
 DOUDOUNE LOURDE, EMPIÈCEMENTS  
 ÉPAULES, MANCHONS, DOUBLURE  
 IMPRIMÉE, 100% POLYESTER TAFFETAS.



6947      8098      1042      1212      5248

**DEMETER**

XS | S | M | L | XL | XXL  
 DOUDOUNE LOURDE, SUPER LIGHT  
 DOUBLURE FLOTTANTE  
 100% POLYESTER TAFFETAS.



DOUDOUNE SKI

DOUDOUNE



9999

# KOTOR

XS | S | M | L | XL | XXL  
DOUDOUNE LÉGÈRE,  
100% POLYESTER TAFFETAS.



# MAPLEAF

XS | S | M | L | XL  
DOUDOUNE LÉGÈRE -  
PANNEAUX IMPRIMÉS FLOCCAGE,  
100% POLYESTER TAFFETAS.



4037 8172 1092 4797 9999 6419 1031 4407 1295 5248 8296 9953

# BIZERTE

XS | S | M | L | XL | XXL  
DOUDOUNE LÉGÈRE,  
100% POLYESTER TAFFETAS.



9999

# JIEL

XS | S | M | L | XL  
DOUDOUNE LÉGÈRE -  
PANNEAUX IMPRIMÉS FLOCCAGE,  
100% POLYESTER TAFFETAS.



4037 8172 1092 4797 9999 6419 1031 4407 1295 5248 8296 9953

# BOURBON

XS | S | M | L | XL | XXL  
DOUDOUNE LÉGÈRE,  
100% POLYESTER TAFFETAS.



9999

# FERNET

XS | S | M | L | XL  
DOUDOUNE LÉGÈRE,  
PANNEAUX IMPRIMÉS FLOCCAGE,  
100% POLYESTER TAFFETAS.

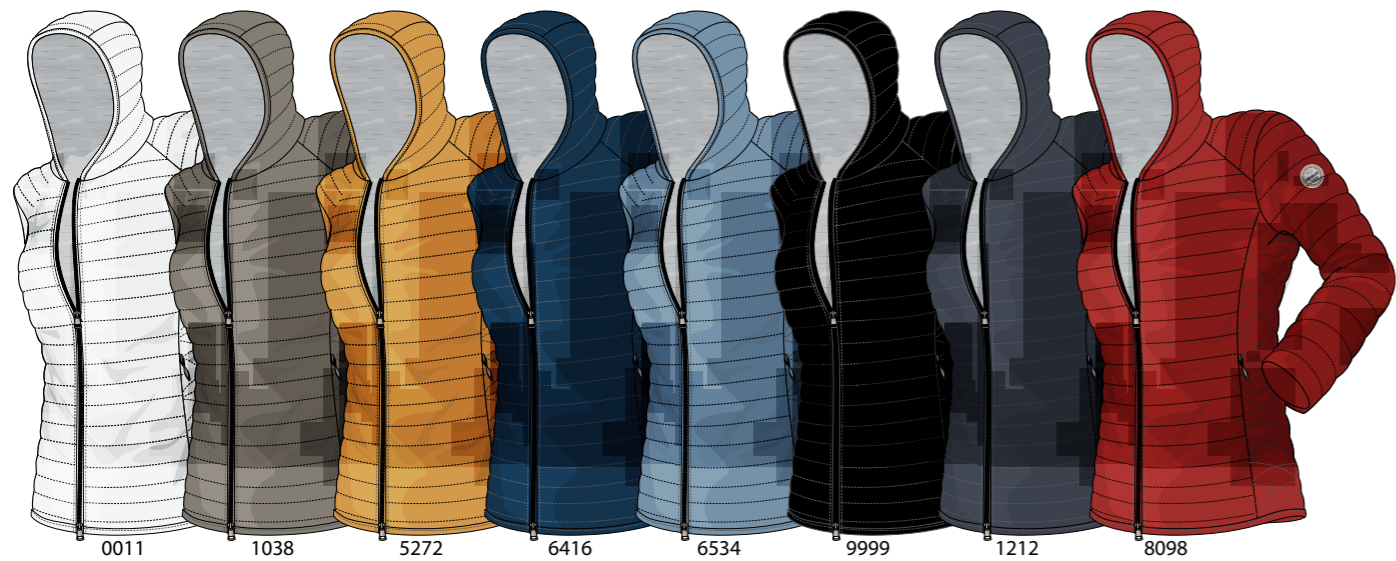


4037 8172 1092 4797 9999 6419 1031 4407 1295 5248 8296 9953

# BRAMBLE

XS | S | M | L | XL | XXL  
DOUDOUNE LÉGÈRE,  
100% POLYESTER TAFFETAS.





0011 1038 5272 6416 6534 9999 1212 8098

## BRANCA

XS | S | M | L | XL | XXL  
DOUDOUNE SUPER LÉGÈRE - 100% NYLON  
SOFT TOUCH - DOUBLURE JERSEY.



0011 1038 5272 6416 6534 9999 1212 8098

## EASTIND

XS | S | M | L | XL | XXL  
DOUDOUNE SUPER LÉGÈRE - 100% NYLON  
SOFT TOUCH.



0011 1038 5272 6416 6534 9999 1212 8098

## YANGTZE

XS | S | M | L | XL  
DOUDOUNE SUPER LÉGÈRE,  
100% NYLON SOFT TOUCH,  
CAPUCHE + MANCHES EN MOLLETON.



9999

## BRYN

XS | S | M | L | XL  
DOUDOUNE SUPER LÉGÈRE - 100% NYLON  
SOFT TOUCH, ASPECT CUIR CRAQUELÉ.



0011 1038 5272 6416 6534 9999 1212 8098

## HONGTA

XS | S | M | L | XL  
DOUDOUNE SUPER LÉGÈRE - 100% NYLON  
SOFT TOUCH.





1088/1212

1079/1212



1088/1212

1079/1212

# RICKEY

XS | S | M | L | XL | XXL  
VESTE DOUBLÉE 100% POLYESTER, MANCHES ET CAPUCHE EN TAFFETAS, MEMBRANE PU.



# RICKBUN

XS | S | M | L | XL | XXL  
VESTE DOUBLÉE 100% POLYESTER, MANCHES ET CAPUCHE EN TAFFETAS, MEMBRANE PU, INTÉRIEUR COL FOURRURE LAPIN VÉRITABLE.



1472

1119

# DAVIS

XS | S | M | L | XL | XXL  
VESTE MAILLE 195GR, INTÉRIEUR GRATTE, 100% POLYESTER.



1119

1472

1471

# PISCO

XS | S | M | L | XL | XXL  
VESTE MAILLE 240GR, PARTIELLEMENT DOUBLÉE + EMPIÈCEMENT TAFFETAS, 100% POLYESTER.



1302

1119

# ANZHEN

XS | S | M | L | XL  
MAILLE 90% ACRYLIQUE 10% LAINE.



1119

1472

# JUMAIR

XS | S | M | L | XL  
VESTE MAILLE 195GR, INTÉRIEUR GRATTE, 100% POLYESTER.



1079

1209

1119

# MAITAI

XS | S | M | L | XL  
VESTE MAILLE DOUBLÉE, 90% ACRYLIQUE 10% LAINE.





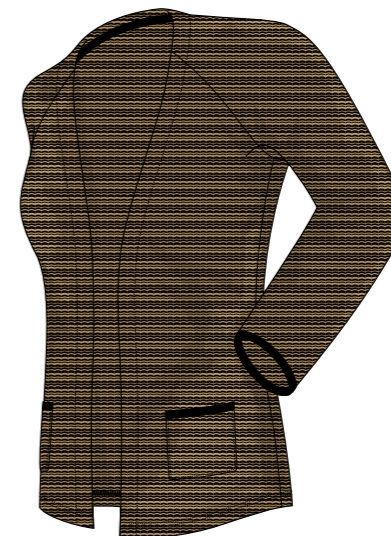
0058

9999

# HAIFA

XS | S | M | L | XL

MAILLE JACQUARD, 100% ACRYLIQUE.



5272

# CASERA

XS | S | M | L | XL

VESTE MAILLE 80% ACRYLIQUE  
20% POLYESTER.



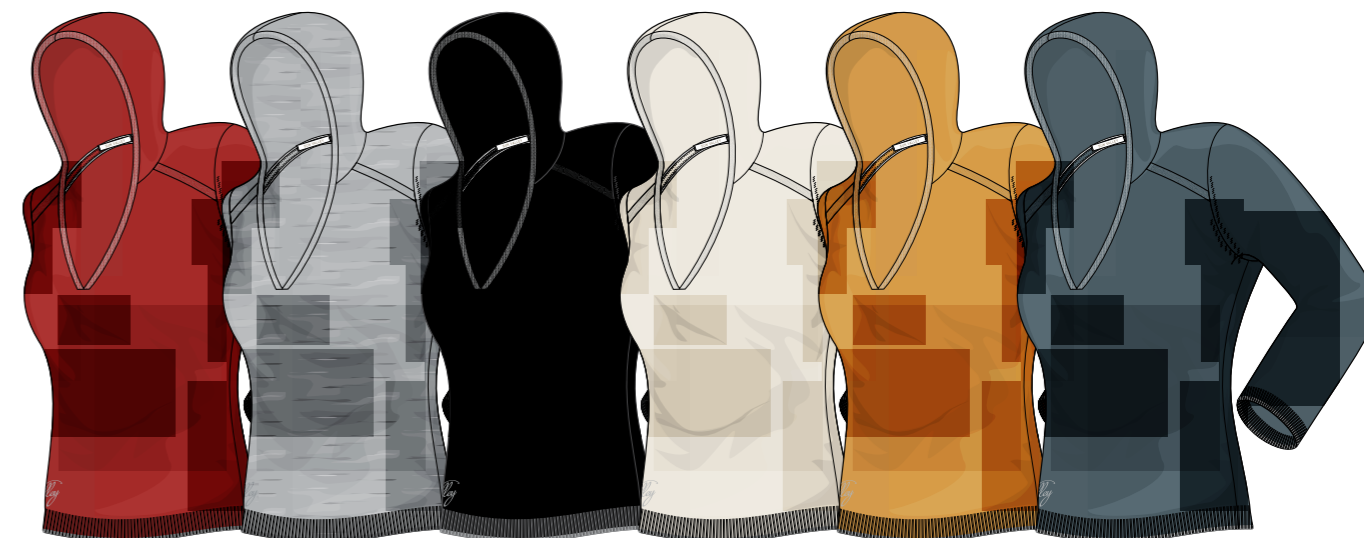
9999

0058

# VALETTE

XS | S | M | L | XL

MAILLE JACQUARD, 100% ACRYLIQUE.



8098

1084

9999

0058

5272

1209

# PINKGIN

XS | S | M | L | XL

MAILLE FINE, 100% ACRYLIQUE,  
CACHEMERE TOUCH.



1472

5272

1119

# FRENCH

XS | S | M | L | XL

MAILLE JACQUARD  
80% ACRYLIQUE 20% NYLON.



0058

5272

1209

8098

1084

9999

# LASTWORD

XS | S | M | L | XL

MAILLE FINE, 100% ACRYLIQUE,  
CACHEMERE TOUCH.





1472

1119

# RAMOS

XS | S | M | L | XL

MAILLE 78% VISCOSE 20% NYLON  
2% LUREX.



1472

# LIDEN

XS | S | M | L | XL

KNIT 55% POLYESTER 43% RAYON  
3% SPANDEX.



1084



1472

# OPERA

XS | S | M | L | XL

MAILLE FINE CHINÉE,  
60% VISCOSE 40% COTON.



1079



8501

# TIFANY

XS | S | M | L | XL

KNIT, 65% RAYON 30% POLYESTER  
5% SPANDEX.



1084



1472

# JUAL

XS | S | M | L | XL

MAILLE FINE CHINÉE,  
60% VISCOSE 40% COTON.



1302

# YSOLP

XS | S | M | L | XL

KNIT JERSEY 170GR,  
100% VISCOSE.



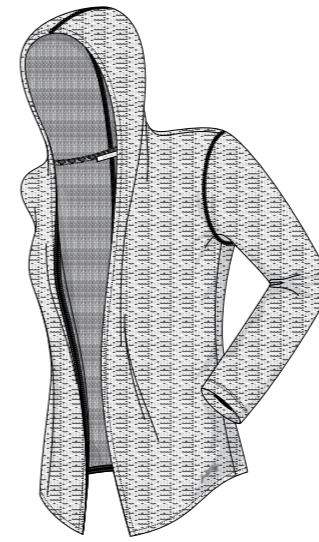




9999 1203

# FOLLAIN

XS | S | M | L | XL  
TERRY FLEECE 210GR,  
100% COTON - BURN OUT FINISH.



1079

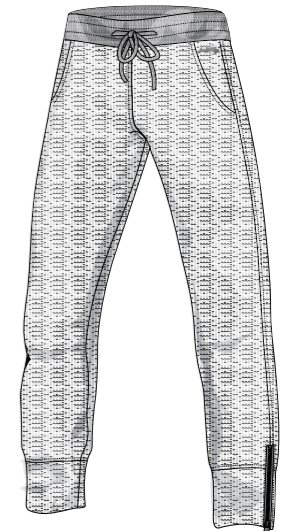
# RAYBA

XS | S | M | L | XL  
SLUB JERSEY 280GR,  
46% COTON 54% POLYESTER.



# OLIVEYR

XS | S | M | L | XL  
SLUB JERSEY 280GR,  
46% COTON 54% POLYESTER.



1079



9999 1203

# LOUBOT

XS | S | M | L | XL  
TERRY FLEECE 210GR,  
100% COTON - BURN OUT FINISH.



1181

# WORLDIS

XS | S | M | L | XL  
SLUB JERSEY 300GR,  
70% COTON 30% POLYESTER.



9999 1203

# VIVIER

XS | S | M | L | XL  
TERRY FLEECE 210GR,  
100% COTON - BURN OUT FINISH.



6403

# STAPPY

XS | S | M | L | XL  
CHEMISE -DENIM LOOK- 90GR,  
ACID WASH FINISH, 100% COTON.





6416

# MORSE

XS | S | M | L | XL

T-SHIRT JERSEY 130GR. STONE WASH  
85% POLYESTER 15% LIN.



6416

# PAULINA



0052

1084

1079

8098

# LOYOLA

XS | S | M | L | XL

T-SHIRT SLUB JERSEY 140GR. 40% COTON  
60% POLYESTER - BURN OUT FINISH.



9999

# JAFFAR

XS | S | M | L | XL

T-SHIRT JERSEY 50% COTON 50% MODAL  
+ VOILE IMPRIMÉ 100% POLYESTER.



1084



1079



8098



1084



0052

# CLYDNUR

XS | S | M | L | XL

T-SHIRT JERSEY 140GR. 60% POLYESTER  
40% COTON - BURN OUT FINISH.



1212



8098



6416



1038

# SEDWICK

XS | S | M | L | XL

T-SHIRT 100% COTON,  
COLD PIGMENT DYED.





0052

6455

1212

8098

## WILSON

XS | S | M | L | XL

T-SHIRT SLUB JERSEY 150GR,  
65% POLYESTER 35% MODAL



9999

## TWICE

34 | 36 | 38 | 40 | 42 | 44

DENIM 98% COTON 2% ELASTHANE.



1079

0052

1084

8098

## JEFERSON

XS | S | M | L | XL

T-SHIRT JERSEY 140GR, 60% POLYESTER  
40% COTON - BURN OUT FINISH



9999

## GOLDFY

34 | 36 | 38 | 40 | 42 | 44

SERGÉ TEINT EN PIÈCE,  
98% COTON 2% ELASTHANE.



1212

8098

5245

## LIVAND

34 | 36 | 38 | 40 | 42 | 44

SERGÉ TEINT EN PIÈCE,  
98% COTON 2% ELASTHANE.



T-SHIRT

PANTALON



Jacques BOUHANA | Collection homme | 06 52 96 19 65 | jacques.b@sun-valley.fr  
Sophie LUBINO | Collection femme | 06 95 38 78 98 | lubino.sophie@sun-valley.fr

Nicolas HABERTHUR | 06 12 57 29 59 | nicohabertthur@gmail.com

Fabrice JALBERT | 06 50 68 40 56 | fabjalb@live.fr

Ludovic MADEC | 06 74 90 66 53 | ludovic.madec@wanadoo.fr

Jacky BENZAQUEN | 04 42 71 13 56 ou 06 22 75 72 22 | jacky@sun-valley.fr

Cédric CHABRILLAT | 06 68 31 23 05 | cchabrilat@gmail.com

Jean Claude MOSER | 06 85 71 80 38 | mosercharben@aol.com

Directeur commercial | Jacky BENZAQUEN  
Tel : 04 42 71 13 56 ou 06 22 75 72 22 | jacky@sun-valley.fr

Service commercial  
Chrystelle | Tel : 04 42 71 13 59 | chrystelle@sun-valley.fr | Fax : 04 42 71 13 89  
Anaïs | Tel : 04 42 71 13 75 | anais@sun-valley.fr

Uli Mette | +49(0)171 194 3917 | info@sun-valley-germany.de

Pom Import | +32(0) 85 253 224 | info@pom-import.be

Christian Braillard | +41(0) 79 310 67 50 | cemeg@bluewin.ch

Clusone Company s.r.l | +39 (0) 346 259 60 | info@clco.it

Ivch Extrem LTD | 0035 929 562 615 | ivch\_extrem@mail.bg

Siszerviz KFT | 0036 209 705 555 | tormapozo@hotmail.com

Jandy's Innovative | +61 755 94 94 88 | janet@jandys.com

Riding Sports Apparel | +1 514 693 0711 | mgrassetti@sympatico.ca

Sun Valley Asia Ltd | +852 3421 2255 | arnaud@sun-valley-sportswear.com

Noël Repussard | 01 40 16 92 01 | noelrepussard@hotmail.com

Export Department | Patricia MESSINGER-BRUNOT  
Tel : +33(0)4 42 71 13 68 | Fax : +33(0)4 42 71 13 89 | export@sun-valley.fr

**Sun Valley**   
WWW.SUN-VALLEY.COM

**CREATED  
FOR  
FREEDOM**

**SUN VALLEY - SPORT EQUIPMENT SAS**  
Zone Athelia II Avenue des Tamaris - 13704 la Ciotat cedex - FRANCE

tel : +33(0)4 42 71 45 45  
fax : +33(0)4 42 71 54 26

[www.sun-valley.fr](http://www.sun-valley.fr) | [info@sun-valley.fr](mailto:info@sun-valley.fr)